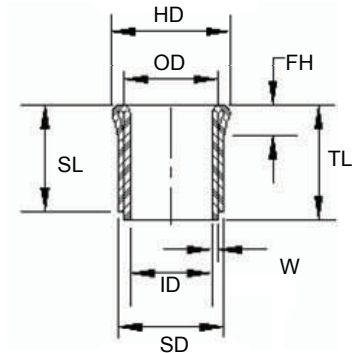
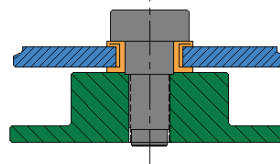




NYLTITE DOUBLE WALL BUSHINGS:

- Grommet
- Positioning assistance
- Protective device
- Strain relief
- Edge protector
- Bushing



PART NUMBER (-L)	SCREW SIZE	NOMINAL (DEC. INCH)	ID +.004/-0.003	W +/- .002	OD +/- .008	HD (REF)	SD +.012/-0.010	FH (REF)	MAX. SL SEE NOTE
DWB-01-XX-XX	1	.073	.075	.012	.099	.110	.123	.019	.312
DWB-02-XX-XX	2	.086	.088	.012	.112	.125	.136	.022	.375
DWB-03-XX-XX	3	.099	.101	.012	.125	.138	.149	.025	.437
DWB-04-XX-XX	4	.112	.116	.013	.140	.155	.168	.028	.500
DWB-05-XX-XX	5	.125	.129	.014	.159	.175	.185	.031	.500
DWB-06-XX-XX	6	.138	.142	.015	.172	.190	.202	.034	.562
DWB-08-XX-XX	8	.164	.168	.015	.198	.218	.228	.039	.625
DWB-10-XX-XX	10	.190	.194	.017	.228	.250	.262	.045	.750
DWB-12-XX-XX	12	.216	.220	.017	.254	.280	.288	.050	.875
DWB-14-XX-XX	1/4	.250	.252	.020	.292	.320	.332	.058	1.000
DWB-15-XX-XX	5/16	.313	.316	.020	.356	.390	.396	.071	1.250
DWB-16-XX-XX	3/8	.375	.379	.020	.419	.460	.459	.083	1.500
DWB-17-XX-XX	7/16	.438	.441	.022	.486	.535	.529	.097	1.750
DWB-18-XX-XX	1/2	.500	.504	.022	.548	.600	.592	.109	2.000
DWB-19-XX-XX	5/8	.625	.629	.025	.679	.745	.730	.135	2.500
DWB-20-XX-XX	3/4	.750	.754	.028	.810	.890	.867	.162	3.000
DWB-21-XX-XX	7/8	.875	.890	.032	.954	1.050	.882	.190	3.500
DWB-22-XX-XX	1.0	1.000	1.005	.035	1.075	1.187	1.118	.215	4.000

TYPICAL PART NUMBER :

DWB-10-04-10
 SIZE SL TL

NYLTITE DOUBLE WALL BUSHING
 FOR #10 SCREW, 1/4" LONG SKIRT,
 TOTAL LENGTH 1.250

SEE NOTE BELOW FOR NUMBERING
 CONVENTION

NOTE: THE FIRST "XX" IDENTIFIER IN THE PART NUMBER CLUSTER INDICATES THE LENGTH OF THE SKIRT (SL) IN 1/16" INCREMENTS UP TO THE MAXIMUM VALUE (MAX SL) SHOWN. EXAMPLE- FOR A 1/4" SKIRT, .0625 * 4 = .250". THE MULTIPLIER (04) IS ENTERED AS THIS IDENTIFIER.

THE SECOND SET OF "XX" REPRESENTS THE TOTAL LENGTH (TL), AND CAN BE EQUAL TO "SL" OR GREATER UP TO 6" IN 1/8" (.125) INCREMENTS. THIS LENGTH IS ALSO CALCULATED AS ABOVE USING .125 AS THE MULTIPLICAND. EXAMPLE: FOR A 1 1/4" LENGTH, .125 * 10 = 1.250, (10) IS ENTERED AS THE IDENTIFIER "TL"