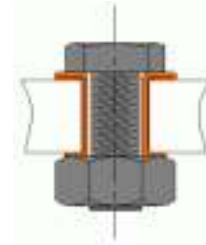




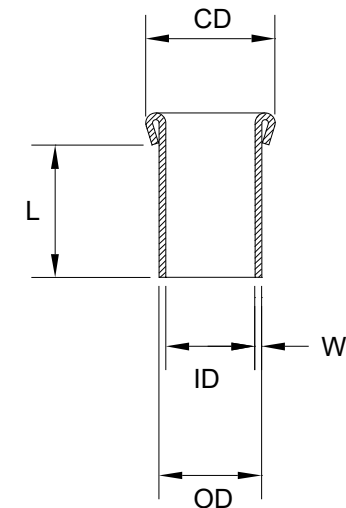
NYLTITE Headed Sleeves:

- Lock and seal
- Act as an anti-rotational device
- Assist with vibration damping
- Versatile and effective
- Available in metric sizes



PART NUMBER (-L)	SCREW SIZE	NOMINAL (DEC. INCH)	ID +.004/- .003	W +/- .002	OD +/- .008	CD +.025/- .015
NHS-02-XX	2	.086	.088	.012	.112	.175
NHS-03-XX	3	.099	.101	.012	.125	.185
NHS-04-XX	4	.112	.116	.013	.140	.195
NHS-05-XX	5	.125	.129	.014	.159	.210
NHS-06-XX	6	.138	.142	.015	.172	.225
NHS-08-XX	8	.164	.168	.015	.198	.270
NHS-10-XX	10	.190	.194	.017	.228	.300
NHS-12-XX	12	.216	.220	.017	.254	.330
NHS-14-XX	1/4	.250	.252	.020	.292	.365
NHS-15-XX	5/16	.312	.316	.020	.356	.460
NHS-16-XX	3/8	.375	.379	.020	.419	.535
NHS-17-XX	7/16	.437	.441	.022	.486	.600
NHS-18-XX	1/2	.500	.504	.022	.548	.645
NHS-19-XX	5/8	.625	.629	.025	.679	.800
NHS-20-XX	3/4	.750	.754	.028	.810	.935
NHS-21-XX	7/8	.875	.879	.032	.954	1.030
NHS-22-XX	1.0	1.000	1.005	.035	1.075	1.280

LENGTH CODE (XX)	L +/- .008
05	.062
1	.125
2	.250
3	.375
4	.500
5	.625
6	.750
7	.875
8	1.000
9	1.125
10	1.250
11	1.375
12	1.500
13	1.625
14	1.750
15	1.875
16	2.000
17	2.125
18	2.250
19	2.375



TYPICAL PART NUMBER :
NHS-10-4

NYLTITE HEADED SLEEVE FOR
#10 SCREW, 1/2" LONG